

STRATEGIC MEDICAL RESEARCH & TRAINING

WWW.STRATEGICMEDICALRT.COM

915 Hwy 321-337, Lenoir City, TN 37771

Phone: (540) 728-1452 Email: RhysWilliams@StrategicMedicalRT.com

USSOCOM TCCC Level III SKU: 7003

Product Category: Training Kit

This comprehensive training package delivers the critical training models to allow you to deliver quality tactical medicine training in a highly mobile package. The twenty-nine wounds included in the training package allows for an immersive training capability that directly relates to skills required to successfully instruct TCCC courses.

This training package is mobile and facilitates and enhances field training specific to SOCOM units as well as in support of Foreign Internal Defense (FID) medical training.

Each Kit Includes the following wounds:

- Surgical Airway Trainer (Neck Wound) (2)
- Surgical Airway Replacement Skin (4)
- GSW Versatile Placement (1)
- Gunshot Wound, Rifle, Thigh (1)
- Femoral Wound - Packable (1)
- Shoulder GSW (1)
- Sucking Chest Wound (1)
- Hip GSW - Large Caliber (1)
- Extremity Wound - Versatile (1)
- Blast Leg - Hip & Thigh (1)
- Blast - Lower Leg (1)
- Anticubital GSW (1)
- Abdominal Eviseration (1)
- Knee Wound - Open (1)
- Open Fracture - Versatile Placement (1)
- GSW Versatile Placement - Medium (1)
- Forearm GSW (1)
- Bleeding System - Complete (14)
- Chest Burn (1)
- Surgical Airway - Burn (1)
- Surgical Airway - Burn (Replacement Skin) (1)
- Forearm Fracture - Compound (1)
- Open Wound - Versatile Placement (1)
- Penetrating Wound - Versatile Placement (1)
- Femur Fracture Compound (1)
- Leg Laceration - Femoral - Packable (1)

**STRATEGIC
MEDICAL
RESEARCH &
TRAINING**

WWW.STRATEGICMEDICALRT.COM

915 Hwy 321-337, Lenoir City, TN 37771

Phone: (540) 728-1452 Email: RhysWilliams@StrategicMedicalRT.com

- Tibia Head Fracture - Compound (1)
- Ankle Fracture - Compound (1)
- Femoral - Laceration (Packable) (1)
- Laceration - Forearm (1)
- Saw Wound - Left Thigh (1)
- Tibia Fracture - Distal Compound (1)

**STRATEGIC
MEDICAL
RESEARCH &
TRAINING**

WWW.STRATEGICMEDICALRT.COM

915 Hwy 321-337, Lenoir City, TN 37771

Phone: (540) 728-1452 Email: RhysWilliams@StrategicMedicalRT.com

Surgical Airway Trainer Replacement Skin

SKU 0001-1

Patented

Package Dimension: 10"x6"x5"

Package Weight: 4.4 lbs

Kit Includes:

- Sacrificial Skin (25)
- Blood Packet (25)

Product Category: Airway

Product Link: <https://www.strategicmedicalrt.com/product-page/surgical-airway-replacement-skin>

Description: Sacrificial Skin for Surgical Airway (Cric) Trainer. Includes fifty sacrificial skins and blood packets.



STRATEGIC MEDICAL RESEARCH & TRAINING

WWW.STRATEGICMEDICALRT.COM

915 Hwy 321-337, Lenoir City, TN 37771

Phone: (540) 728-1452 Email: RhysWilliams@StrategicMedicalRT.com

Surgical Airway Trainer (Neck Wound) **SKU 0002** **Patented**

Product Category: Airway/Gunshot Wound

Product Link: <https://www.strategicmedicalrt.com/product-page/surgical-airway-trainer-neck-wound>

Description: Neck wound variant of SMRT's Surgical Airway (Cric) trainer was designed to simulate the most difficult airway management scenario. The trainee must control active carotid artery bleeding and perform an open surgical airway. This packable wound is compatible with the SMRT Blood Pump System allowing for quick deployment and reset between scenarios.

WARNING: This device is designed to be used only for the open surgical airway procedure. No needle or wire guided procedures should be performed on this training device. A trained medical professional should observe the trainee in a 1:1 ration to ensure safety and accuracy of the procedure.



STRATEGIC MEDICAL RESEARCH & TRAINING

WWW.STRATEGICMEDICALRT.COM

915 Hwy 321-337, Lenoir City, TN 37771

Phone: (540) 728-1452 Email: RhysWilliams@StrategicMedicalRT.com

Surgical Airway Trainer (Burn) SKU 0003 Patented

Product Category: Airway/Burn

Product Link: <https://www.strategicmedicalrt.com/product-page/surgical-airway-trainer-burn>

Description: The burn variant of the surgical airway (Cric) trainer when combined with the burn vest creates a realistic and challenging patient care scenario. Complete with burn-textured and colored sacrificial skin, this model is a must if the care of burn patients is part of your team's mission.

WARNING: This device is designed to be used only for the open surgical airway procedure. No needle or wire guided procedures should be performed on this training device. A trained medical professional should observe the trainee in a 1:1 ration to ensure safety and accuracy of the procedure.



**STRATEGIC
MEDICAL
RESEARCH &
TRAINING**

WWW.STRATEGICMEDICALRT.COM

915 Hwy 321-337, Lenoir City, TN 37771

Phone: (540) 728-1452 Email: RhysWilliams@StrategicMedicalRT.com

**Open Wound – Packable Versatile Placement
SKU 0004
Patent Pending**

Product Category: Blast/Blunt

Product Link: <https://www.strategicmedicalrt.com/product-page/open-wound-packable-versatile-placement>

Description: This wound is one of the most versatile wound in our collection when applied to the limbs or torso. This open wound can represent blunt, blast or other penetrating injuries.



**STRATEGIC
MEDICAL
RESEARCH &
TRAINING**

WWW.STRATEGICMEDICALRT.COM

915 Hwy 321-337, Lenoir City, TN 37771

Phone: (540) 728-1452 Email: RhysWilliams@StrategicMedicalRT.com

Open Wound – Packable Versatile Placement

SKU 0005

Patent Pending

Product Category: Blast/Blunt

Product Link: <https://www.strategicmedicalrt.com/product-page/open-wound-versatile-placement>

Description: This wound is the most versatile wound in our collection when applied to the limbs or torso. This open wound creating a hemorrhage location identification and wound care challenge to students.



**STRATEGIC
MEDICAL
RESEARCH &
TRAINING**

WWW.STRATEGICMEDICALRT.COM

915 Hwy 321-337, Lenoir City, TN 37771

Phone: (540) 728-1452 Email: RhysWilliams@StrategicMedicalRT.com

Forearm Fracture – Compound

SKU: 0006

Patent Pending

Product Category: Blast/Blunt

Product Link: <https://www.strategicmedicalrt.com/product-page/forearm-fracture-compound>

Description: This compound wrist fracture simulates serious blast or blunt trauma to either forearm. Radial and ulnar bones are modeled from CT imaging of real fractures.



**STRATEGIC
MEDICAL
RESEARCH &
TRAINING**

WWW.STRATEGICMEDICALRT.COM

915 Hwy 321-337, Lenoir City, TN 37771

Phone: (540) 728-1452 Email: RhysWilliams@StrategicMedicalRT.com

Blast Leg
SKU: 0008
Patent Pending

Product Category: Blast/Burn

Product Link: <https://www.strategicmedicalrt.com/product-page/leg-blast-thigh-packable-with-high-femoral>

Description: Blast injury presents a unique challenge to first responders. This unique simulator represents multiple superficial and deep wounds including a high femoral laceration. Pictures with open knee and lower leg blast injury.



**STRATEGIC
MEDICAL
RESEARCH &
TRAINING**

WWW.STRATEGICMEDICALRT.COM

915 Hwy 321-337, Lenoir City, TN 37771

Phone: (540) 728-1452 Email: RhysWilliams@StrategicMedicalRT.com

**Blast Lower Leg
SKU 0009
Patent Pending**

Product Category: Blast

Product Link: <https://www.strategicmedicalrt.com/product-page/blast-lower-leg>

Description: Design to accompany the blast leg training aid. This wound simulates multiple superficial penetrating injuries from blast to the lower leg.



**STRATEGIC
MEDICAL
RESEARCH &
TRAINING**

WWW.STRATEGICMEDICALRT.COM

915 Hwy 321-337, Lenoir City, TN 37771

Phone: (540) 728-1452 Email: RhysWilliams@StrategicMedicalRT.com

Burn Chest
SKU: 0010
Patent Pending

Product Category: Burn

Product Link: <https://www.strategicmedicalrt.com/product-page/chest-burn>

Description: This realistic burn vest fits a broad range of role players representing a 40% body surface area burn. Designed to pair with the Burn Surgical Airway trainer to create a complex and challenging critical burn patient.



**STRATEGIC
MEDICAL
RESEARCH &
TRAINING**

WWW.STRATEGICMEDICALRT.COM

915 Hwy 321-337, Lenoir City, TN 37771

Phone: (540) 728-1452 Email: RhysWilliams@StrategicMedicalRT.com

**Femur Fracture
SKU: 0011
Patent Pending**

Product Category: Blast/Blunt

Product Link: <https://www.strategicmedicalrt.com/product-page/femur-fracture-compound>

Description: Compound femur fractures are common in significant blunt trauma. This wound comes with a anatomically accurate bone and is realistic muscle fibers. This packable wound creates a hyper-realistic simulation of a common injury.



**STRATEGIC
MEDICAL
RESEARCH &
TRAINING**

WWW.STRATEGICMEDICALRT.COM

915 Hwy 321-337, Lenoir City, TN 37771

Phone: (540) 728-1452 Email: RhysWilliams@StrategicMedicalRT.com

Large Leg Laceration

SKU: 0012

Patent Pending

Product Category: Blast/Laceration

Product Link: <https://www.strategicmedicalrt.com/product-page/leg-laceration-femoral-packable>

Description: This anterior thigh laceration simulates a packable 14-inch penetrating injury. This wound may be applied to the front, lateral, or posterior aspect of either leg.



**STRATEGIC
MEDICAL
RESEARCH &
TRAINING**

WWW.STRATEGICMEDICALRT.COM

915 Hwy 321-337, Lenoir City, TN 37771

Phone: (540) 728-1452 Email: RhysWilliams@StrategicMedicalRT.com

Tibial Head Fracture – Compound

SKU: 0013

Patent Pending

Product Category: Blast/Blunt

Product Link: <https://www.strategicmedicalrt.com/product-page/tibia-head-fracture-compound>

Description: This high-impact injury simulates a knee dislocation with compound fracture of the tibial head from a blast or blunt trauma. Visible bones is molded from CT images of real tibial fractures.



**STRATEGIC
MEDICAL
RESEARCH &
TRAINING**

WWW.STRATEGICMEDICALRT.COM

915 Hwy 321-337, Lenoir City, TN 37771

Phone: (540) 728-1452 Email: RhysWilliams@StrategicMedicalRT.com

Ankle Fracture - Compound

SKU: 0014

Patent Pending

Product Category: Blast/Blunt

Product Link: <https://www.strategicmedicalrt.com/product-page/ankle-fracture-compound-right-medial-malleolus>

Description: This real-to-life wound featured durable bone molded from CT images of a distal tibial spiral fracture with tissue disruption consistent with significant deceleration injury or blast.



**STRATEGIC
MEDICAL
RESEARCH &
TRAINING**

WWW.STRATEGICMEDICALRT.COM

915 Hwy 321-337, Lenoir City, TN 37771

Phone: (540) 728-1452 Email: RhysWilliams@StrategicMedicalRT.com

Knee Wound
SKU: 0015
Patent Pending

Product Category: Blast/Blunt

Product Link: <https://www.strategicmedicalrt.com/product-page/open-knee-wound-packable>

Description: This open knee wound comes with anatomically accurate knee anatomy include tibia, patella, and patellar tendon. This wound is consistent with, blunt, blast and shotgun wounds.



**STRATEGIC
MEDICAL
RESEARCH &
TRAINING**

WWW.STRATEGICMEDICALRT.COM

915 Hwy 321-337, Lenoir City, TN 37771

Phone: (540) 728-1452 Email: RhysWilliams@StrategicMedicalRT.com

Open Fracture – Versatile Placement

SKU: 0016

Patent Pending

Product Category: Blast/Blunt

Product Link: <https://www.strategicmedicalrt.com/product-page/open-fracture-versatile-placement>

Description: This versatile compound fracture quickly creates a bleeding extremity compound fracture to the upper or lower extremities.



**STRATEGIC
MEDICAL
RESEARCH &
TRAINING**

WWW.STRATEGICMEDICALRT.COM

915 Hwy 321-337, Lenoir City, TN 37771

Phone: (540) 728-1452 Email: RhysWilliams@StrategicMedicalRT.com

Abdominal Evisceration

SKU: 0017

Patent Pending

Product Category: Blast/Gunshot

Product Link: <https://www.strategicmedicalrt.com/product-page/abdominal-evisceration>

Description: This abdominal evisceration with a protruding small bowel simulates injuries secondary to gunshot, blast or lacerations.



**STRATEGIC
MEDICAL
RESEARCH &
TRAINING**

WWW.STRATEGICMEDICALRT.COM

915 Hwy 321-337, Lenoir City, TN 37771

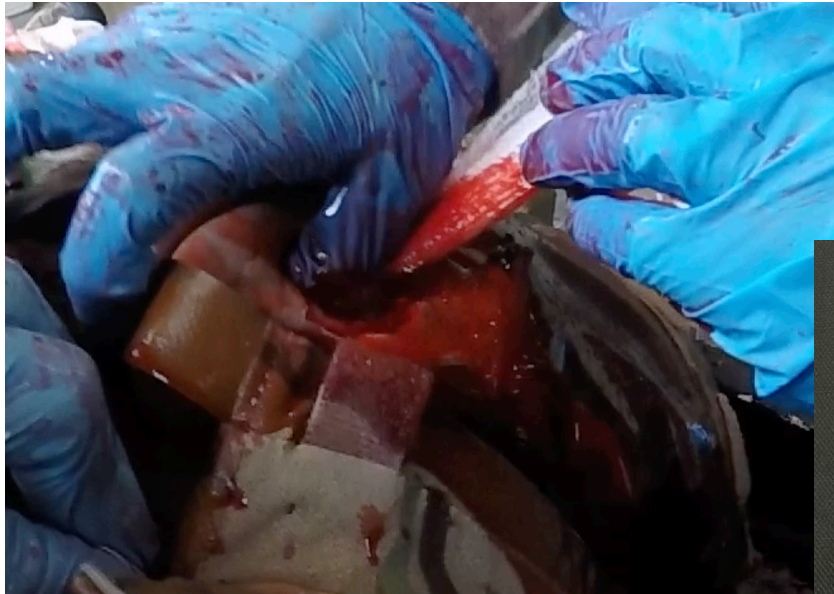
Phone: (540) 728-1452 Email: RhysWilliams@StrategicMedicalRT.com

GSW Shoulder
SKU: 0020
Patent Pending

Product Category: Gunshot

Product Link: <https://www.strategicmedicalrt.com/product-page/shoulder-gsw>

Description: This unique training aid presents a realistic edge-of-armor shoulder wound complete with a bleeding, packable cavity containing a fractured collar bone. The entrance at the left scapula traverses the subclavian artery making a unique wound-packing challenge for your students. The entrance wound over the right scapula is capable of leaking and bubbling.



STRATEGIC MEDICAL RESEARCH & TRAINING

WWW.STRATEGICMEDICALRT.COM

915 Hwy 321-337, Lenoir City, TN 37771

Phone: (540) 728-1452 Email: RhysWilliams@StrategicMedicalRT.com

Femoral – Packable

SKU: 0021

Patent Pending

Product Category: Blast/Gunshot

Product Link: <https://www.strategicmedicalrt.com/product-page/femoral-wound-packable>

Description: Large cavity, high femoral wounds are among the most challenging life-threatening wounds. This wound simulates a blast or gunshot exit wound capable of accepting five rolls of gauze. The unique design prevents slipping while worn and anatomically corrects bleeding.



**STRATEGIC
MEDICAL
RESEARCH &
TRAINING**

WWW.STRATEGICMEDICALRT.COM

915 Hwy 321-337, Lenoir City, TN 37771

Phone: (540) 728-1452 Email: RhysWilliams@StrategicMedicalRT.com

Antecubital Wound

SKU: 0023

Patent Pending

Product Category: Gunshot

Product Link: <https://www.strategicmedicalrt.com/product-page/antecubital-arm-wound>

Description: This penetrating arm wound creates a realistic bleeding effect and allows for wound track packing or the inclusion of penetrating objects.



**STRATEGIC
MEDICAL
RESEARCH &
TRAINING**

WWW.STRATEGICMEDICALRT.COM

915 Hwy 321-337, Lenoir City, TN 37771

Phone: (540) 728-1452 Email: RhysWilliams@StrategicMedicalRT.com

Femoral – Laceration (Packable)

SKU: 0024

Patent Pending

Product Category: Blast/Laceration

Product Link: <https://www.strategicmedicalrt.com/product-page/femoral-laceration-packable>

Description: This high femoral wound simulates immediate life-threatening bleeding from penetrating injury. This allows for a large amount of wound packing with a wound profile consistent with blast or laceration.



**STRATEGIC
MEDICAL
RESEARCH &
TRAINING**

WWW.STRATEGICMEDICALRT.COM

915 Hwy 321-337, Lenoir City, TN 37771

Phone: (540) 728-1452 Email: RhysWilliams@StrategicMedicalRT.com

Extremity Wound – Versatile Placement

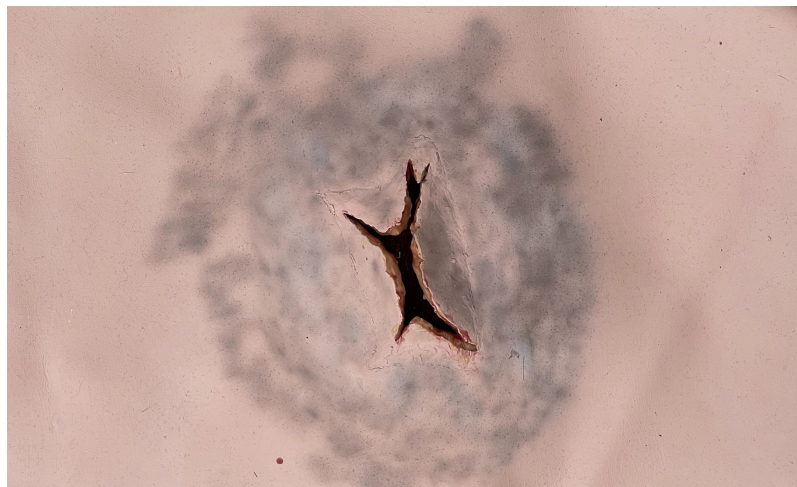
SKU: 0025

Patent Pending

Product Category: Blast/Gunshot

Product Link: <https://www.strategicmedicalrt.com/product-page/extremity-wound-versatile-placement>

Description: This packable extremity can be used to simulate blunt or penetrating trauma as well as impaled objects in numerous locations for maximum training flexibility.



**STRATEGIC
MEDICAL
RESEARCH &
TRAINING**

WWW.STRATEGICMEDICALRT.COM

915 Hwy 321-337, Lenoir City, TN 37771

Phone: (540) 728-1452 Email: RhysWilliams@StrategicMedicalRT.com

Gunshot Wound Forearm/Lower Leg

SKU: 00026

Patent Pending

Product Category: Gunshot

Product Link: <https://www.strategicmedicalrt.com/product-page/forearm-gsw>

Description: This bleeding, packable forearm or lower leg gunshot wound includes an entrance wound above the wrist/ankle with an exit at the upper portion of the forearm/calf.

Laceration of Forearm/Lower Leg

SKU: 0027

Patent Pending

Product Category: Blast/Laceration

Product Link: <https://www.strategicmedicalrt.com/product-page/forearm-laceration>

Description: This bleeding, packable forearm/lower leg laceration can be used for blast injury, impaled objects or laceration.

**STRATEGIC
MEDICAL
RESEARCH &
TRAINING**

WWW.STRATEGICMEDICALRT.COM

915 Hwy 321-337, Lenoir City, TN 37771

Phone: (540) 728-1452 Email: RhysWilliams@StrategicMedicalRT.com

Gunshot Wound – Thigh

SKU: 0028

Patent Pending

Product Category: Gunshot

Product Link: <https://www.strategicmedicalrt.com/product-page/thigh-gsw>

Description: This wound realistically simulates a high-velocity gunshot wound to the mid-thigh with a permanent wound track from entrance to exit. Tissue is exposed from the wound and a natural flow of blood creates an assessment challenge.



**STRATEGIC
MEDICAL
RESEARCH &
TRAINING**

WWW.STRATEGICMEDICALRT.COM

915 Hwy 321-337, Lenoir City, TN 37771

Phone: (540) 728-1452 Email: RhysWilliams@StrategicMedicalRT.com

Laceration Thigh

SKU: 0028

Patent Pending

Product Category: Blast/Laceration/Gunshot

Product Link: <https://www.strategicmedicalrt.com/product-page/thigh-saw-wound>

Description: This mid-thigh open wound outlines the realistic anatomy of the underlying muscles and realistic blood flow. This open wound can be used to simulate blast, laceration or gunshot wound injuries.



**STRATEGIC
MEDICAL
RESEARCH &
TRAINING**

WWW.STRATEGICMEDICALRT.COM

915 Hwy 321-337, Lenoir City, TN 37771

Phone: (540) 728-1452 Email: RhysWilliams@StrategicMedicalRT.com

Gunshot Wound Hip & Thigh

SKU: 0030

Patent Pending

Product Category: Gunshot/Blast

Product Link: <https://www.strategicmedicalrt.com/product-page/hip-gsw-large-caliber>

Description: This large cavity wound simulates a high-velocity gunshot wound to the hip with exit through the lateral thigh with extensive undermined tissue. This wound creates a unique assessment and treatment challenge as the entrance wound is often initially missed and the source of the bleeding must be accessed through the wound cavity. This wound may also be used for blast scenarios due to the large irregular wound pattern.



**STRATEGIC
MEDICAL
RESEARCH &
TRAINING**

WWW.STRATEGICMEDICALRT.COM

915 Hwy 321-337, Lenoir City, TN 37771

Phone: (540) 728-1452 Email: RhysWilliams@StrategicMedicalRT.com

Gunshot Wound Versatile Placement

SKU: 0032

Patent Pending

Product Category: Gunshot

Product Link: <https://www.strategicmedicalrt.com/product-page/gsw-versatile-placement>

Description: This packable Gun Shot Wound (GSW) can be placed on the upper arm, thigh, and forearm in adults or thighs on pediatric role players.



**STRATEGIC
MEDICAL
RESEARCH &
TRAINING**

WWW.STRATEGICMEDICALRT.COM

915 Hwy 321-337, Lenoir City, TN 37771

Phone: (540) 728-1452 Email: RhysWilliams@StrategicMedicalRT.com

Gunshot Wound Versatile Placement – Medium

SKU: 0048

Patent Pending

Product Category: Gunshot Wound

Product Link: <https://www.strategicmedicalrt.com/product-page/gsw-versatile-placement-medium>

Description: This wound allows for simulated rifle wound placement in a wide variety of areas from high-femoral, abdominal or chest. This wound is packable from entrance to exit and offers a realistic blood flow pattern.



**STRATEGIC
MEDICAL
RESEARCH &
TRAINING**

WWW.STRATEGICMEDICALRT.COM

915 Hwy 321-337, Lenoir City, TN 37771

Phone: (540) 728-1452 Email: RhysWilliams@StrategicMedicalRT.com

Open Pneumothorax – Sucking Chest Wound

SKU: 0049

Patent Pending

Product Category: Gunshot/Blast/Respiratory

Product Link: <https://www.strategicmedicalrt.com/product-page/open-pneumothorax-sucking-chest-wound>

Description: This unique wound simulation consistently and easily creates a lethal open pneumothorax in your trauma scenarios. This wound system provides audible gurgling and foaming from the simulated chest cavity.



**STRATEGIC
MEDICAL
RESEARCH &
TRAINING**

WWW.STRATEGICMEDICALRT.COM

915 Hwy 321-337, Lenoir City, TN 37771

Phone: (540) 728-1452 Email: RhysWilliams@StrategicMedicalRT.com

Bleeding System – Complete

SKU: 2001

Patent Pending

Product Category: Accessory

Product Link: <https://www.strategicmedicalrt.com/product-page/bleeding-system-complete>

Description: Made from rugged components and designed for compatibility with standard hydration systems, the SMRT Bleeding System can produce an oozing effect or high-pressure bleeding. This kit comes with a sling-style bag and a two-liter reservoir.

